

Madeline Flannel



60" x 60"

Featuring fabrics from Madeline Flannel



Designed with the Electric Quilt 5 (EQ5) Software

This pattern is available exclusively on the Electric Quilt website at www.electricquilt.com



Madeline Flannel - Quilt Information

(All dimensions are in inches - Horizontal then Vertical)



Style:	Custom Set Quilt
Overall size:	60" x 60"
Main Blocks: (Finished Sizes)	1 Madeline Flannel Block 21" x 21"
Quilt Top:	49½" x 49½"
Sashing:	None
Borders:	2 Mitered
Binding:	7 strips 2¼" wide for binding

† After the body of your quilt top is finished, please measure horizontally and vertically through the center of your quilt. If the center of your quilt does not measure 50" x 50", you will need to adjust the lengths of your borders to fit.

*Trim the selvages from all border strips. Sew all strips together end to end to make a long strip. Repeat for Border 2.



Border 1:

Border Style: Mitered
Finished Widths: Left: 1¼" Top: 1¼" Right: 1¼" Bottom: 1¼"
Cut (6) 1¾" strips*
Cut 4 at 1¾" x 54½" †



Border 2:

Border Style: Mitered
Finished Widths: Left: 4" Top: 4" Right: 4" Bottom: 4"
Cut (6) 4½" strips*
Cut 4 at 4½" x 62" †

Cutting out the Madeline Flannel Center Block

At the end of these directions are two different options for constructing the Madeline Flannel Center Block - rotary cutting charts and template patterns - both generated from Electric Quilt 5.



Make 1 Madeline Flannel Center Block



5561-01
Cut 4 "A" Templates

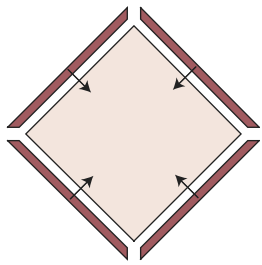


5566-22
Cut 4 "B" Templates

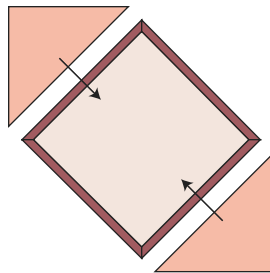


5562-01
Cut 1 "C" Template

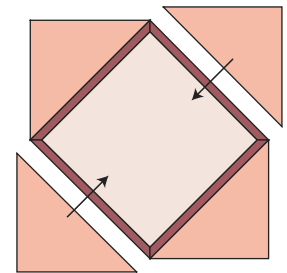
Sewing the Madeline Flannel Center Block



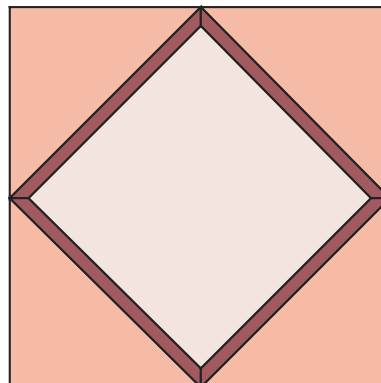
1. Sew the mitered strips to the center square



2. Sew two opposite corners to the center square



3. Sew the final two opposite corners to the center square

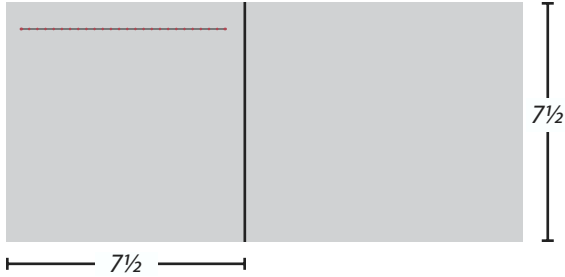


4. The finished block

Cutting out the Quilt Top Blocks

The red dotted line indicates the straight-of-grain of the fabric.

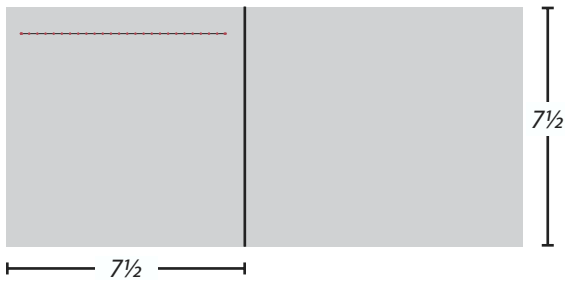
Cutting Diagrams



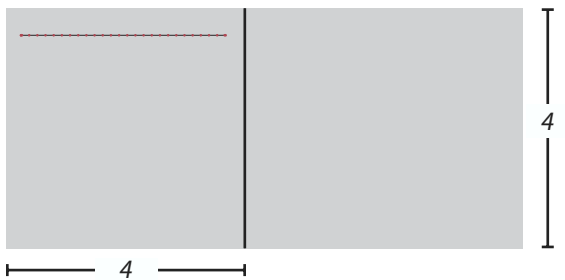
Patch Count



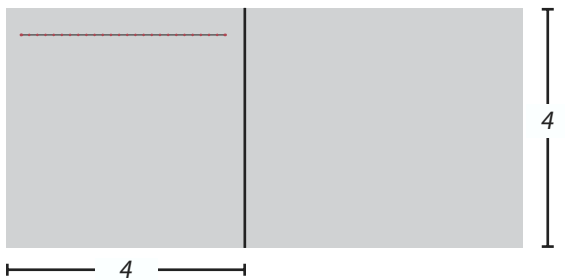
5561-01
4 patches



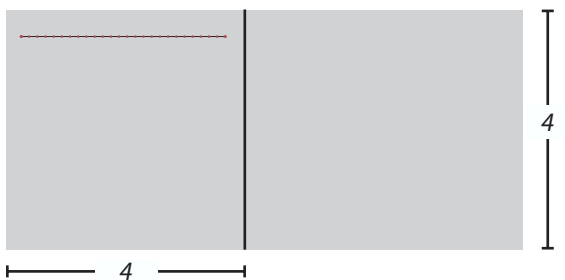
5563-21
12 patches



5567-01
16 patches



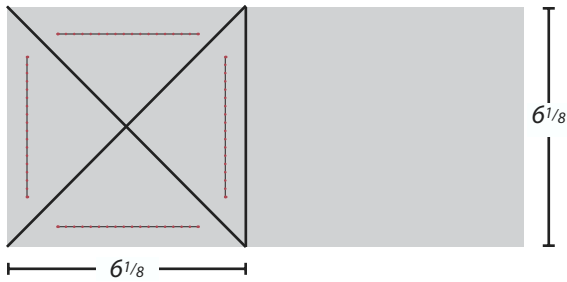
5566-22
4 patches



5567-22
4 patches

Cutting out the Quilt Top Blocks, continued

Cutting Diagrams

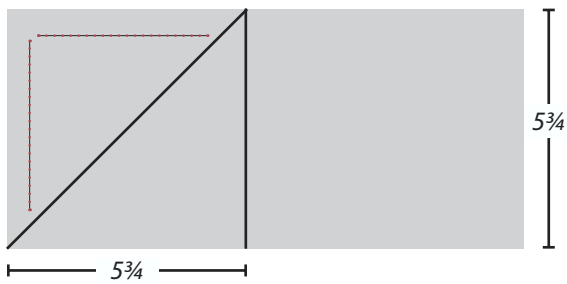


Patch Count



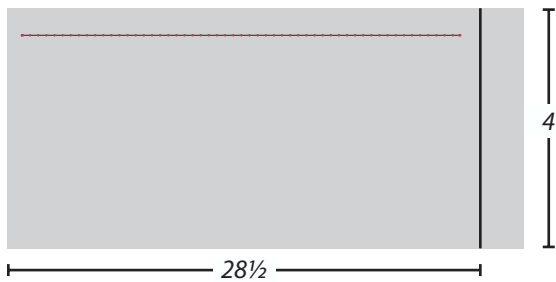
5567-22

Cut 8 squares to make 32 patches



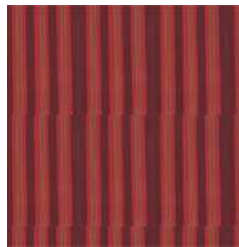
5567-22

Cut 2 squares to make 4 patches



5566-21

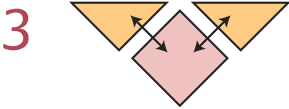
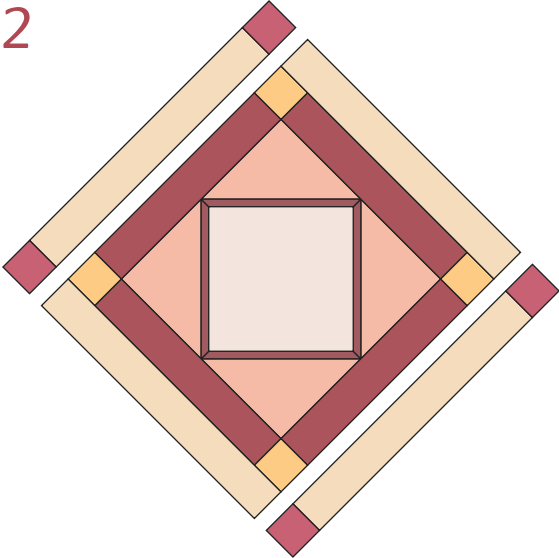
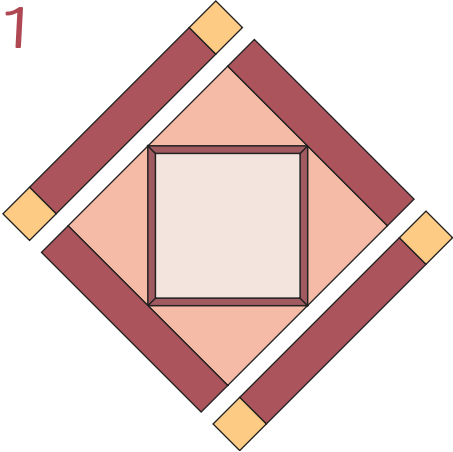
4 patches



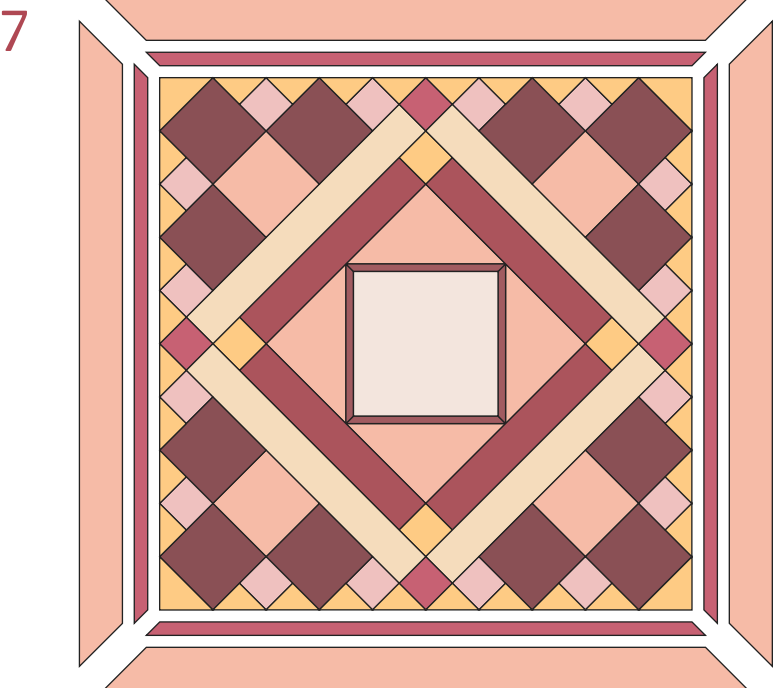
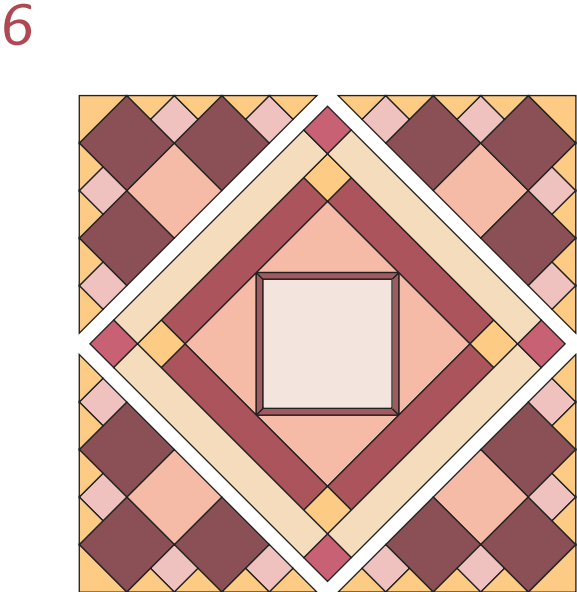
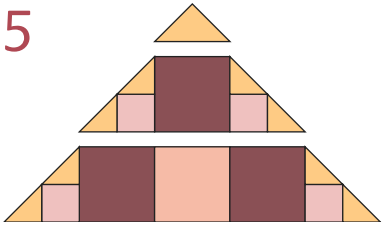
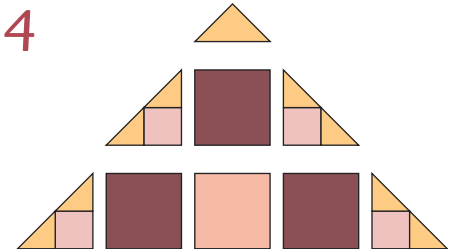
5565-21

4 patches

Sewing the Quilt Top



Sew 16 of these pieces together to make the outside triangles

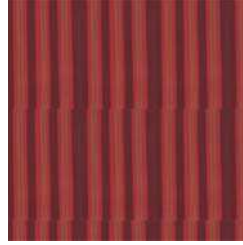


Fabric Yardage



5561-01
Quilt top: 5/8 YARD

Second Border: 1 YARD



5565-21
5/8 YARD
Binding: 1/2 YARD
(cut 7 strips 2 1/4" wide for binding)



5562-01
1/2 YARD

Backing: 3 1/2 YARDS



5566-21
5/8 YARD



5563-21
3/4 YARD



5566-22
Quilt top: 1/4 YARD

First Border: 3/8 YARD



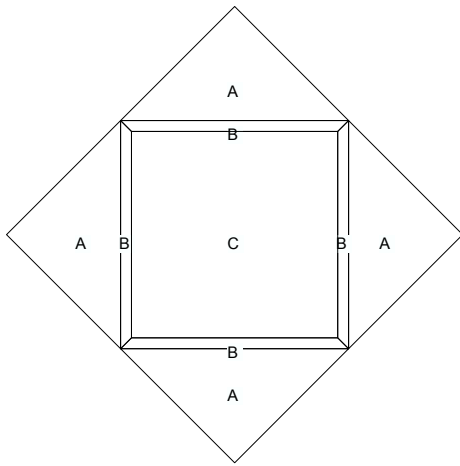
5567-01
3/8 YARD



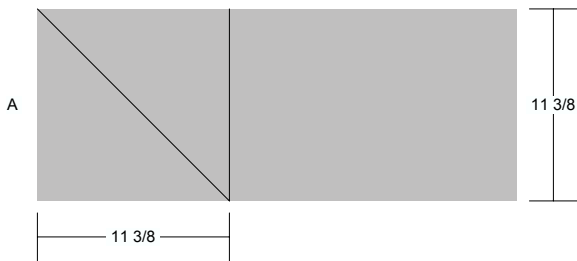
5567-22
1/2 YARD

Madeline Flannel Center Block

Pattern for 29.70x29.70 block
Key Block (4/50 actual size)



Cutting Diagrams

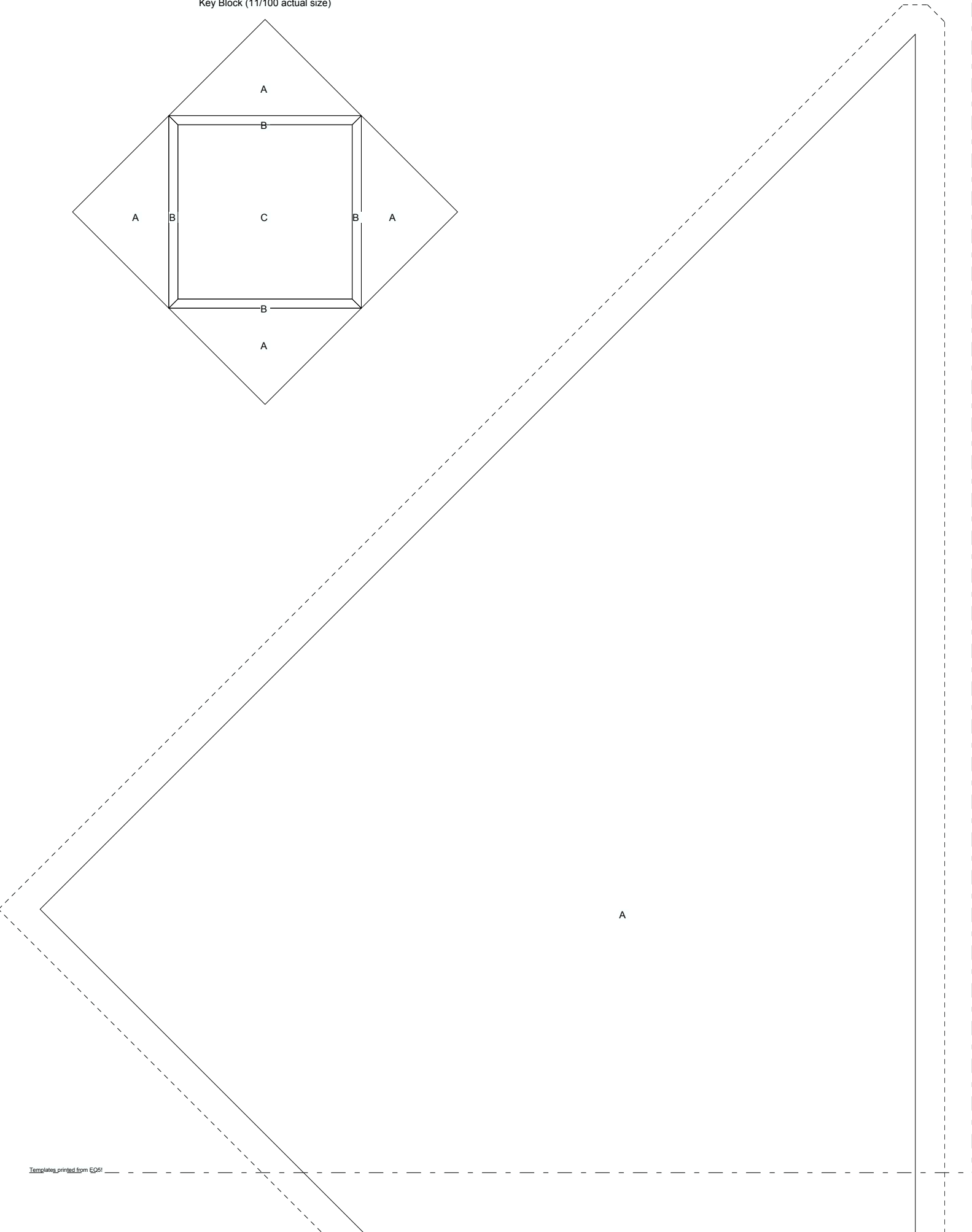
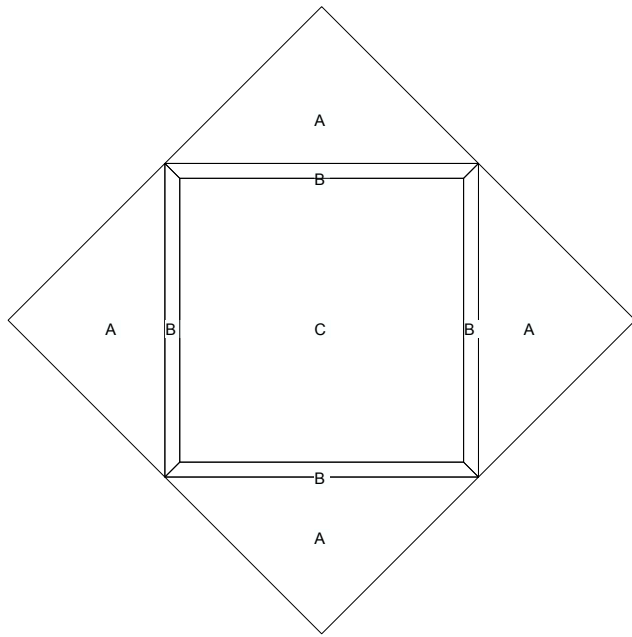


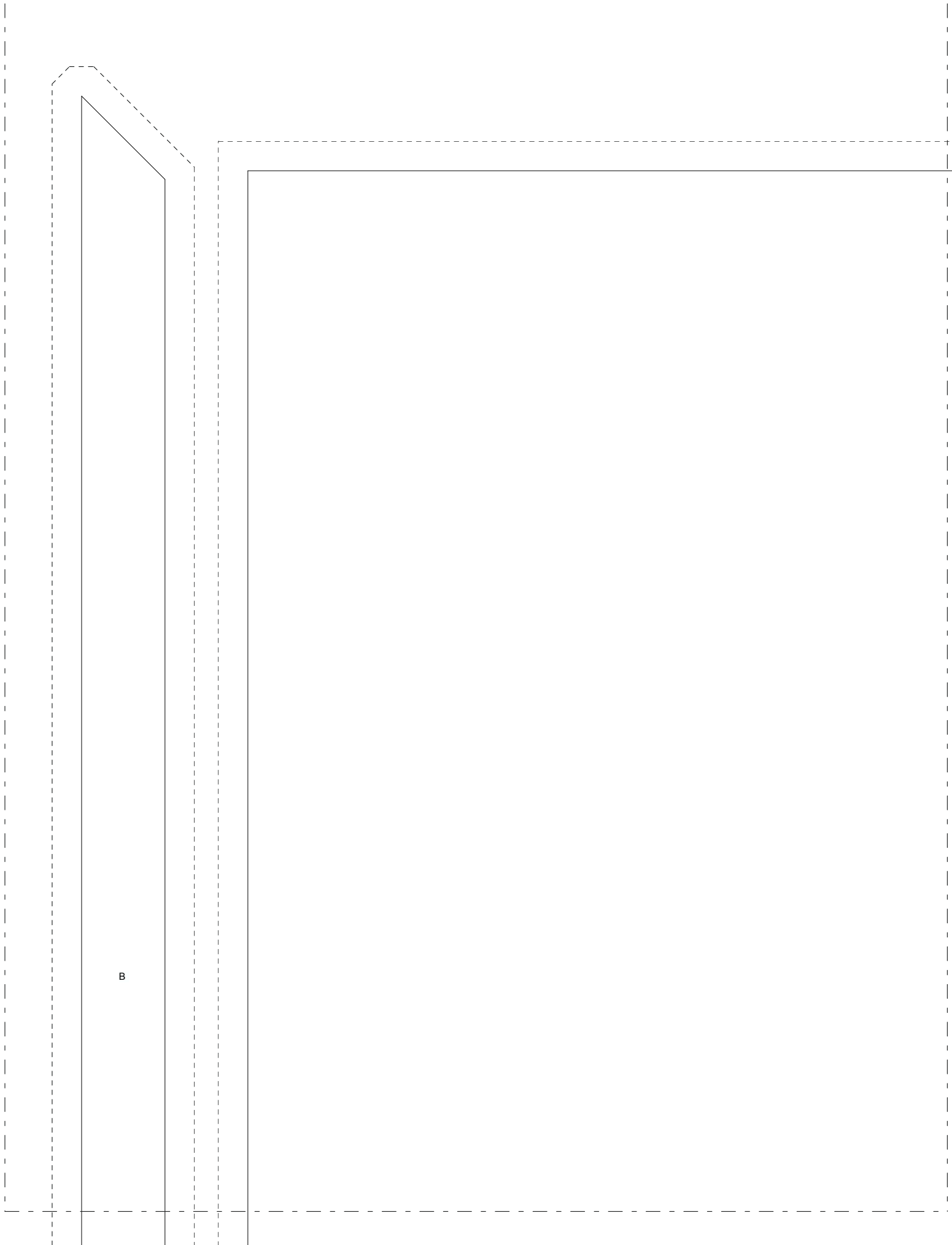
Patch Count



Madeline Flannel Center Block

Pattern for 29.70x29.70 block
Key Block (11/100 actual size)





B

c

